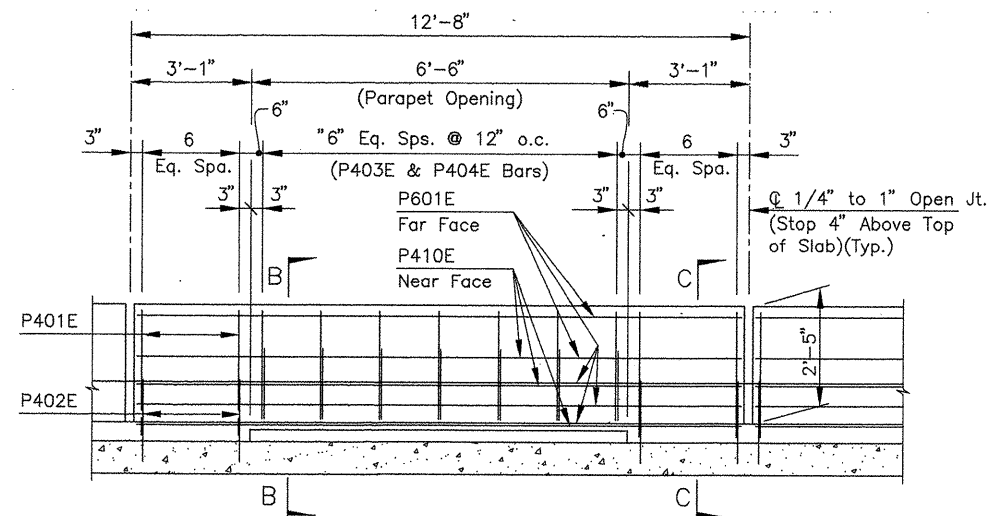
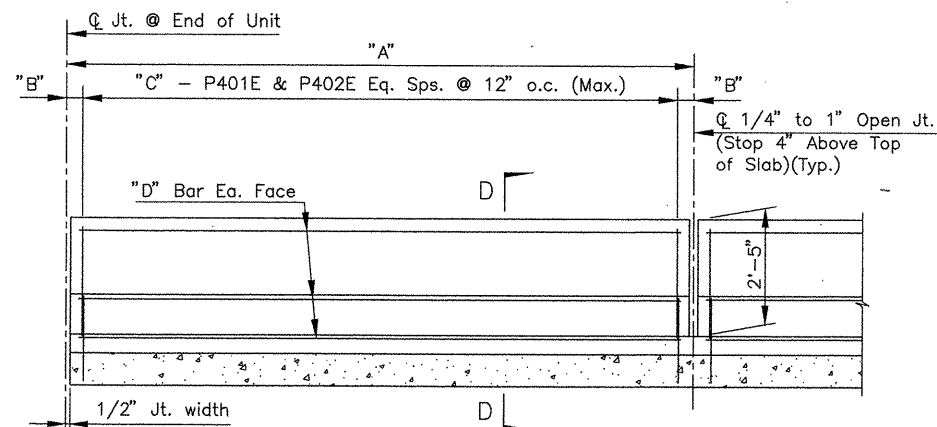


COMPANY\1999\JOBS\99-044 AHTD\WHITERIVER\JOB 110395\264 Parapet\1 ACAD SCALE: 3/4"=1'-0"

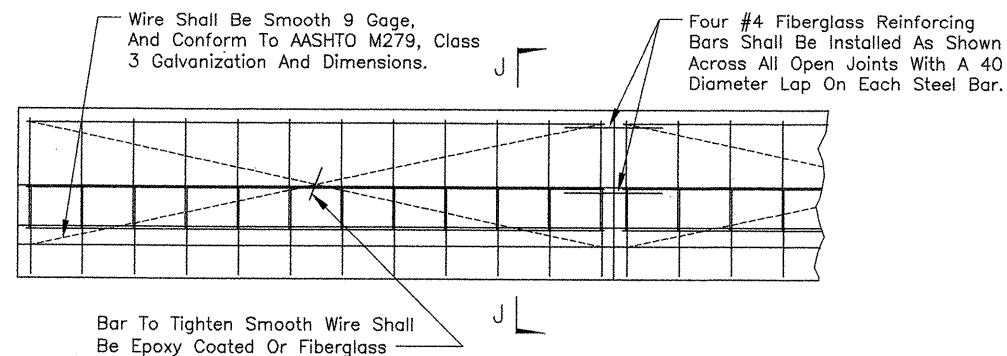
DATE REVISED	DATE FILMED	DATE REVISED	DATE FILMED	FED. ROAD NO.	STATE	FED. AID PROJ. NO.	SHEET NO.	TOTAL SHEETS
					ARK.			
				JOB NO.		110395	101	243
				06830		386' UNIT		47094



SECTION A-A (FOR OPEN PARAPET RAIL)
N.T.S.



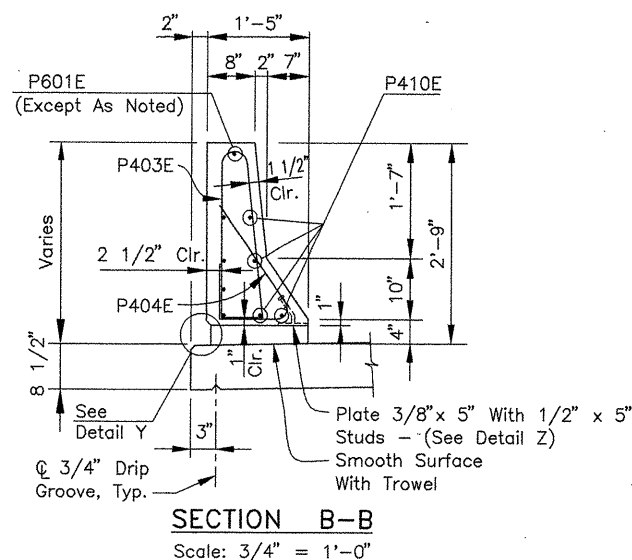
SECTION A-A (FOR CLOSED PARAPET RAIL)
N.T.S.



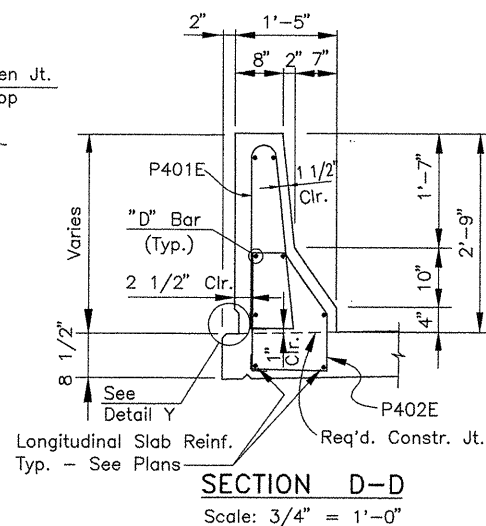
All Panels Shall Be Braced As Shown To Prevent Racking. All Open Joints Shall Be Sawed As Soon As Practical To A Minimum Width Of 1/4". To Control Cracking Before Sawing, All Joints Must Be Grooved Before The Concrete Is Set. Sawing Of The Joints Must Be Controlled So It Will Follow The Grooved Joint.

The Extruded Parapet Shall Conform To The Horizontal And Vertical Lines Shown On The Plans Or As Directed By The Engineer And Shall Present A Smooth, Uniform Appearance And Texture.

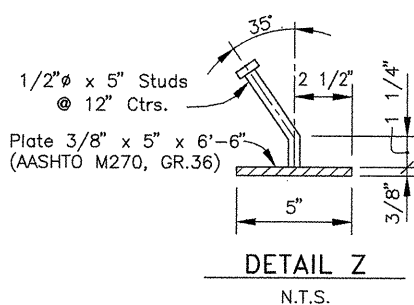
DETAILS OF OPTIONAL SLIPFORMING OF
CONCRETE PARAPET RAIL (OPEN OR CLOSED)
N.T.S.



SECTION B-B
Scale: 3/4" = 1'-0"

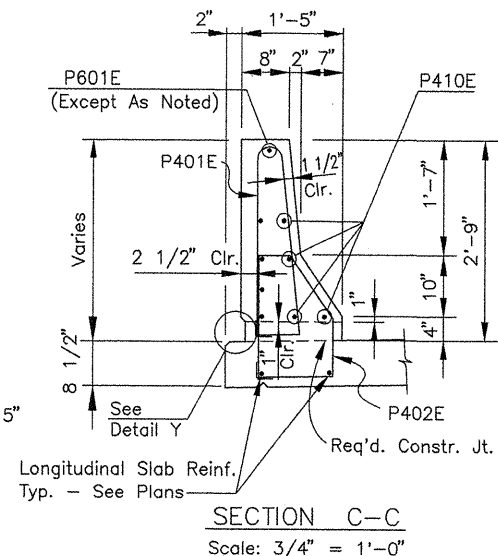


SECTION D-D
Scale: 3/4" = 1'-0"

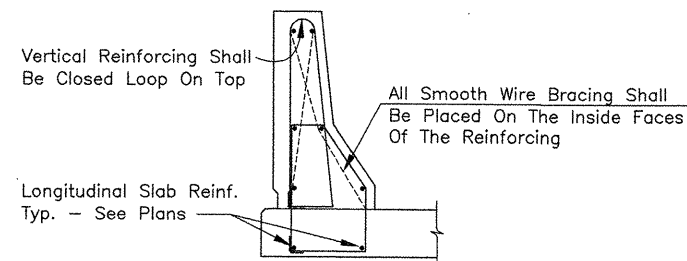


Notes:
Parapet Studs Shall Be 5" Long, Granular Flux Filled, Solid Fluxed, Or Equal And Automatically End Welded To The Plate. Studs And Plate Shall Meet The Requirements Of Section 807. Studs And Plates Shall Be Measured And Paid For As "Structural Steel In Beam Spans (AASHTO M270, GR.50W)."

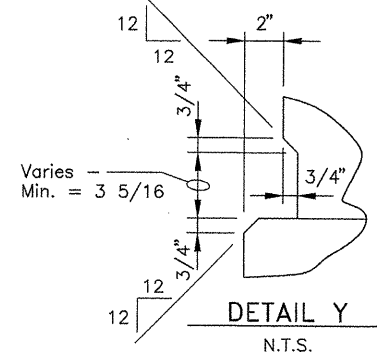
The Surfaces Of The 3/8" Plates Which Will Not be in Contact With Concrete Shall Be Painted In Accordance With Section 638, Or As Approved By The Engineer. Only One Prime Coat Is Required Where Multiple Coats Are Specified. All Coats Shall Be Applied In The Fabricator's Shop. Painting Will Not Be Paid For Directly, But Will Be Considered Subsidiary To "Structural Steel In Beam Spans (AASHTO M270, GR.50W)."



SECTION C-C
Scale: 3/4" = 1'-0"



SECTION J-J
Scale: 3/4" = 1'-0"



DETAIL Y
N.T.S.

VARIABLES FOR CLOSED PARAPET RAIL				
A	B	C	D	R
12'-1"	6"	12 Eq. Sps.	P405E	5,065.41
5'-4 5/8"	6"	5 Eq. Sps.	P406E	5,105.41
13'-0"	6"	12 Eq. Sps.	P407E	5,065.41
11'-6"	6"	11 Eq. Sps.	P408E	5,105.41
12'-0"	6"	11 Eq. Sps.	P409E	5,065.41
12'-8"	6"	12 Eq. Sps.	P410E	5,065.41
10'-8 7/8"	6"	10 Eq. Sps.	P411E	5,065.41
5'-3"	6"	5 Eq. Sps.	P412E	5,105.41

ALTERNATE NO. 1 & 2

COMMON DETAILS OF 386'
CONT. COMP. PLATE GIRDER UNIT
(SHEET 11 OF 11)

WHITE RIVER STR. & APPRS
(CLARENDON) (PH III) (F)
MONROE COUNTY

ROUTE 79 SEC. 13

ARKANSAS STATE HIGHWAY COMMISSION
LITTLE ROCK, ARK.

Engstrom/Modjeski and Masters

DRAWN BY: GPT DATE: Sep. 10 FILENAME: b11039514_s10
CHECKED BY: YO DATE: Sep. 10 SCALE: 3/4" = 1'-0"
DESIGNED BY: GPT DATE: Sep. 10
BRIDGE NO. 06830 DRAWING NO. 47094

BRIDGE ENGINEER